

IBKRCampus

IBKRWebinars

March 7, 2024

Interactive Brokers

Introducing IBKR Desktop

Andrew Wilkinson

Director of Trading Education
Interactive Brokers

Jeff Praissman

Sr. Trading Education Specialist
Interactive Brokers

www.ibkrcampus.com/webinars

www.ibkrcampus.eu/webinars

Exchange and Industry Sponsored Webinars are presented by unaffiliated third parties. IBKR is not responsible for the content of these presentations. You should review the contents of each presentation and make your own judgment as to whether the content is appropriate for you. IBKR does not provide recommendations or advice. This presentation is not an advertisement or solicitation for new customers. It is intended only as an educational presentation.

Disclosure:

Options involve risk and are not suitable for all investors. For information on the uses and risks of options, you can obtain a copy of the Options Clearing Corporation risk disclosure document titled Characteristics and Risks of Standardized Options by visiting ibkr.com/occ. Multiple leg strategies, including spreads, will incur multiple transaction costs.

Futures are not suitable for all investors. The amount you may lose may be greater than your initial investment. Before trading futures, please read the [CFTC Risk Disclosure](#). For a copy visit your local Interactive Brokers Website.

Security futures involve a high degree of risk and are not suitable for all investors. The amount you may lose may be greater than your initial investment. Before trading security futures, please read the [Security Futures Risk Disclosure Statement](#). For a visit copy your local Interactive Brokers Website.

There is a substantial risk of loss in foreign exchange trading. The settlement date of foreign exchange trades can vary due to time zone differences and bank holidays. When trading across foreign exchange markets, this may necessitate borrowing funds to settle foreign exchange trades. The interest rate on borrowed funds must be considered when computing the cost of trades across multiple markets.

The Order types available through Interactive Brokers Trader Workstation are designed to help you limit your loss and/or lock in a profit. Market conditions and other factors may affect execution. In general, orders guarantee a fill or guarantee a price, but not both. In extreme market conditions, an order may either be executed at a different price than anticipated or may not be filled in the marketplace.

There is a substantial risk of loss in trading futures and options. Past performance is not indicative of future results.

Any stock, options or futures symbols displayed are for illustrative purposes only and are not intended to portray recommendations.

IRS Circular 230 Notice: These statements are provided for information purposes only, are not intended to constitute tax advice which may be relied upon to avoid penalties under any federal, state, local or other tax statutes or regulations, and do not resolve any tax issues in your favor.

Interactive Brokers LLC is a member of NYSE FINRA SIPC

Interactive Brokers Canada Inc - Is a member of the Canadian Investment Regulatory Organization (CIRO) and Member - Canadian Investor Protection Fund

Interactive Brokers (U.K.) Limited is authorised and regulated by the Financial Conduct Authority. FCA Register Entry Number 208159

Interactive Brokers Ireland Limited is regulated by the Central Bank of Ireland. CBI, reference number C423427

Interactive Brokers Australia Pty. Ltd. - ABN 98 166 929 568 is licensed and regulated by the Australian Securities and Investments Commission AFSL: 453554

Interactive Brokers Singapore Pte. Ltd. - Is licensed and regulated by the Monetary Authority of Singapore. MAS, Licence No. CMS100917

Interactive Brokers Hong Kong Limited is regulated by the Hong Kong Securities and Futures Commission, and is a member of the SEHK and the HKFE

Interactive Brokers India Pvt. Ltd. member: NSE, BSE, SEBI. Regn. No. SEBI Registration No. INZ000217730; NSDL: IN-DP-NSDL-301-2008

Interactive Brokers Central Europe Zrt. is licensed and regulated by the Central Bank of Hungary (Magyar Nemzeti Bank) under no. H-EN-III-623/2020

IBKR Desktop

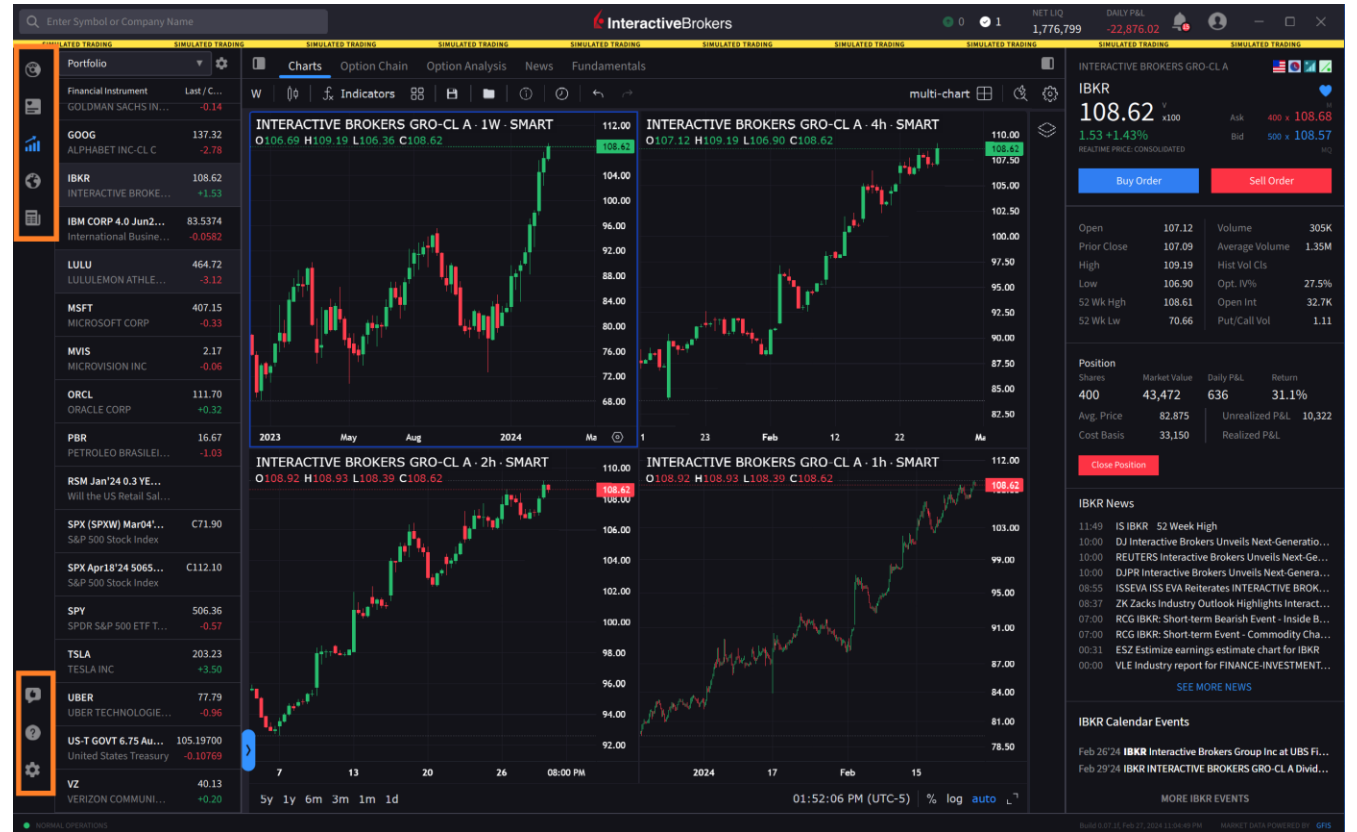
Presented by Andrew Wilkinson & Jeff Praissman

March 7, 2024

Desktop Screens

Access by Clicking on Icons

- Portfolio
- Watchlist
- Quote
- Screeners
- News
- Settings

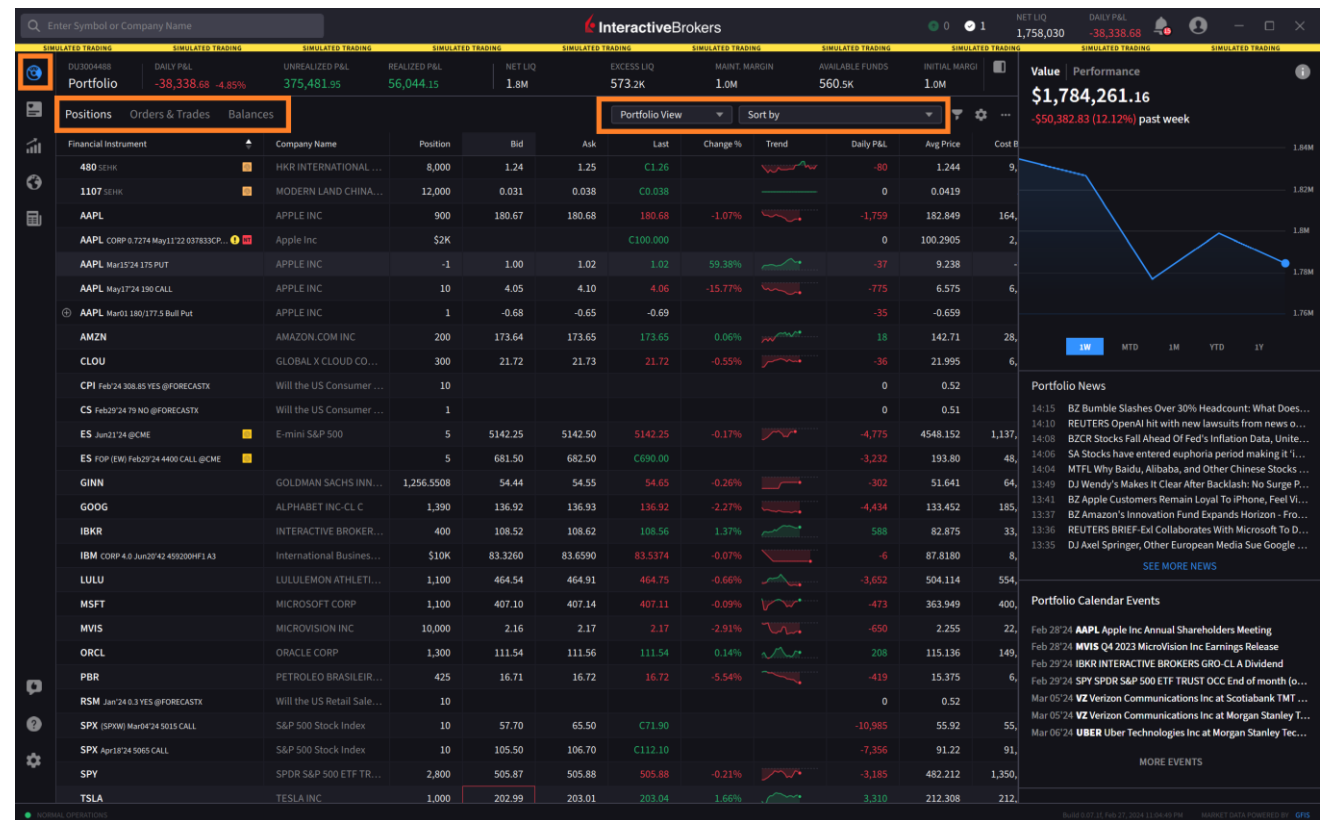


Any stock, options or futures symbols displayed are for illustrative purposes only and are not intended to portray recommendations, or an invitation or inducement to trade a particular financial instrument or to engage in an investment activity. There is a substantial risk of loss in trading futures and options. Past performance is not indicative of future results.

The Portfolio Screen

Key Features

- Customize the View
- Sortable
- Create an Order Ticket Directly
- See Orders & Trades
- Balances

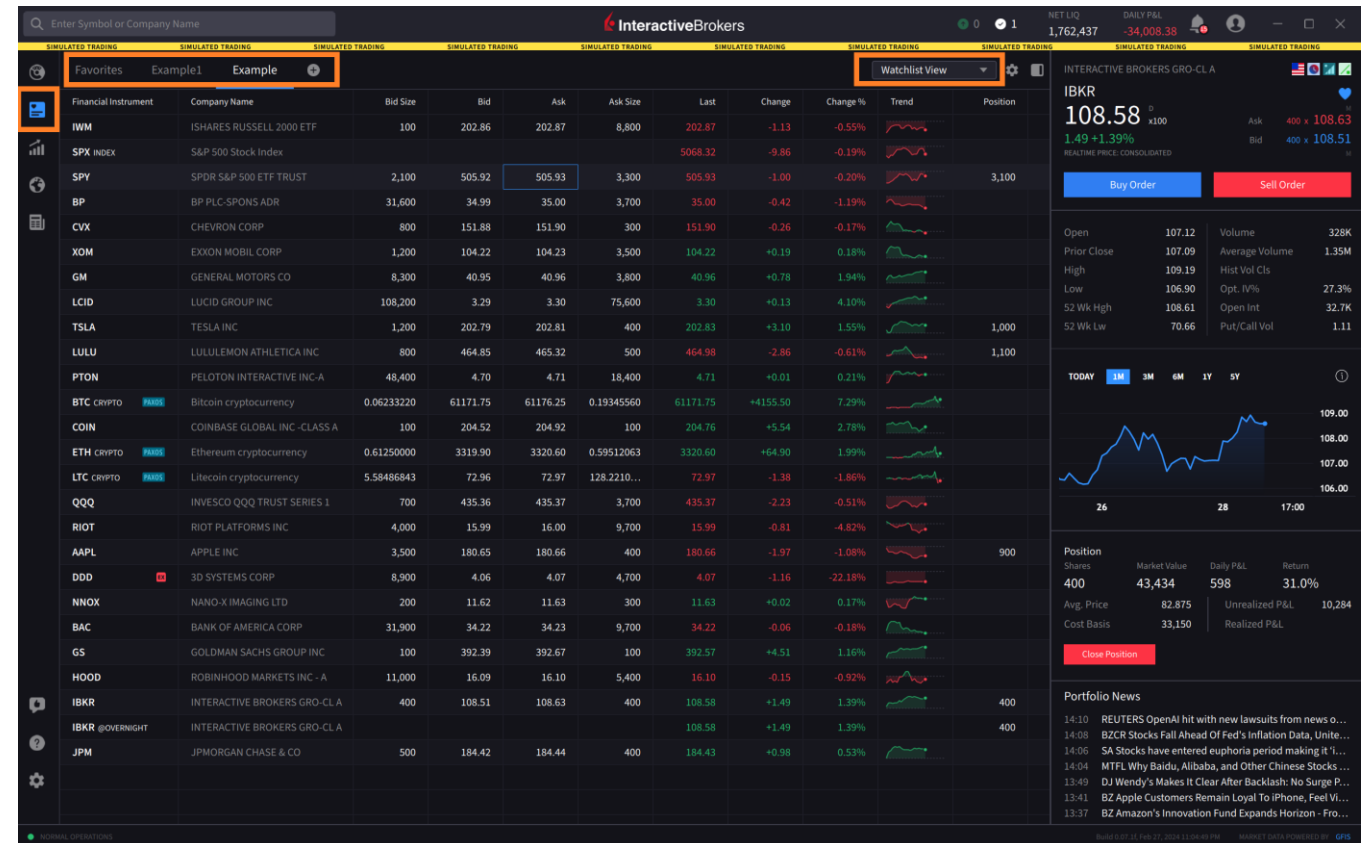


Any stock, options or futures symbols displayed are for illustrative purposes only and are not intended to portray recommendations, or an invitation or inducement to trade a particular financial instrument or to engage in an investment activity. There is a substantial risk of loss in trading futures and options. Past performance is not indicative of future results.

The Watchlist Screen

Key Features

- Customize the View
- Create an Order Ticket Directly
- Use Previously Created Watchlists or Create New Ones

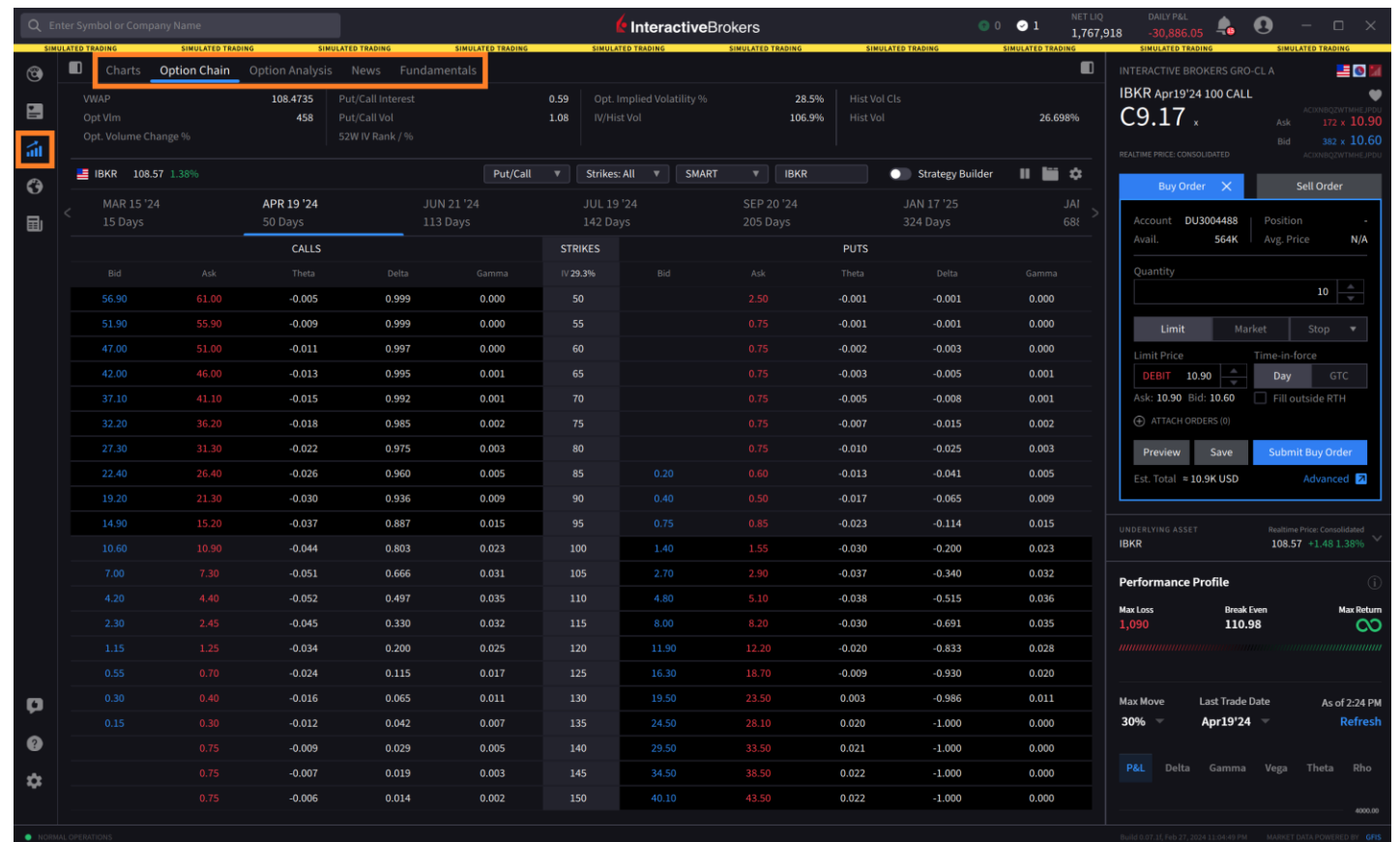


Any stock, options or futures symbols displayed are for illustrative purposes only and are not intended to portray recommendations, or an invitation or inducement to trade a particular financial instrument or to engage in an investment activity. There is a substantial risk of loss in trading futures and options. Past performance is not indicative of future results.

The Quote Screen

Key Features

- Charts
- Option Chains
- Option Analysis
- News
- Fundamentals



Any stock, options or futures symbols displayed are for illustrative purposes only and are not intended to portray recommendations, or an invitation or inducement to trade a particular financial instrument or to engage in an investment activity. There is a substantial risk of loss in trading futures and options. Past performance is not indicative of future results.

Screeners

Key Features

- US Stocks & ETFs
- Asia Stocks
- European Stocks
- MultiSort
 - Up to 10 Sort Factors
- Standard Filters

The screenshot displays the InteractiveBrokers stock screener interface. The top navigation bar includes tabs for 'US Stocks', 'Asia Stocks', 'EUR Stocks', and 'ETFs'. Below this, there are filters for 'All US Stocks', 'NYSE', 'AMEX', 'NASDAQ', 'Pink Sheets', 'IPO Stocks', 'Airlines', 'Biotech', 'Energy', 'Financial', 'Media', 'Retail', 'Technology', and 'Industries'. The main area shows a list of 50 stocks, with columns for 'Financial Instru...', 'Company Name', 'Last', 'Change', 'Change %', 'Market Cap', 'Volume', 'Average Vol...', 'P/E', 'Open', 'High', and 'Low'. The 'MultiSort' and 'Standard Filters' options are highlighted in the left sidebar. The 'MultiSort' option is described as 'Rank stocks based on factors of your choice' and the 'Standard Filters' option is described as 'Find products by adding filters manually'.

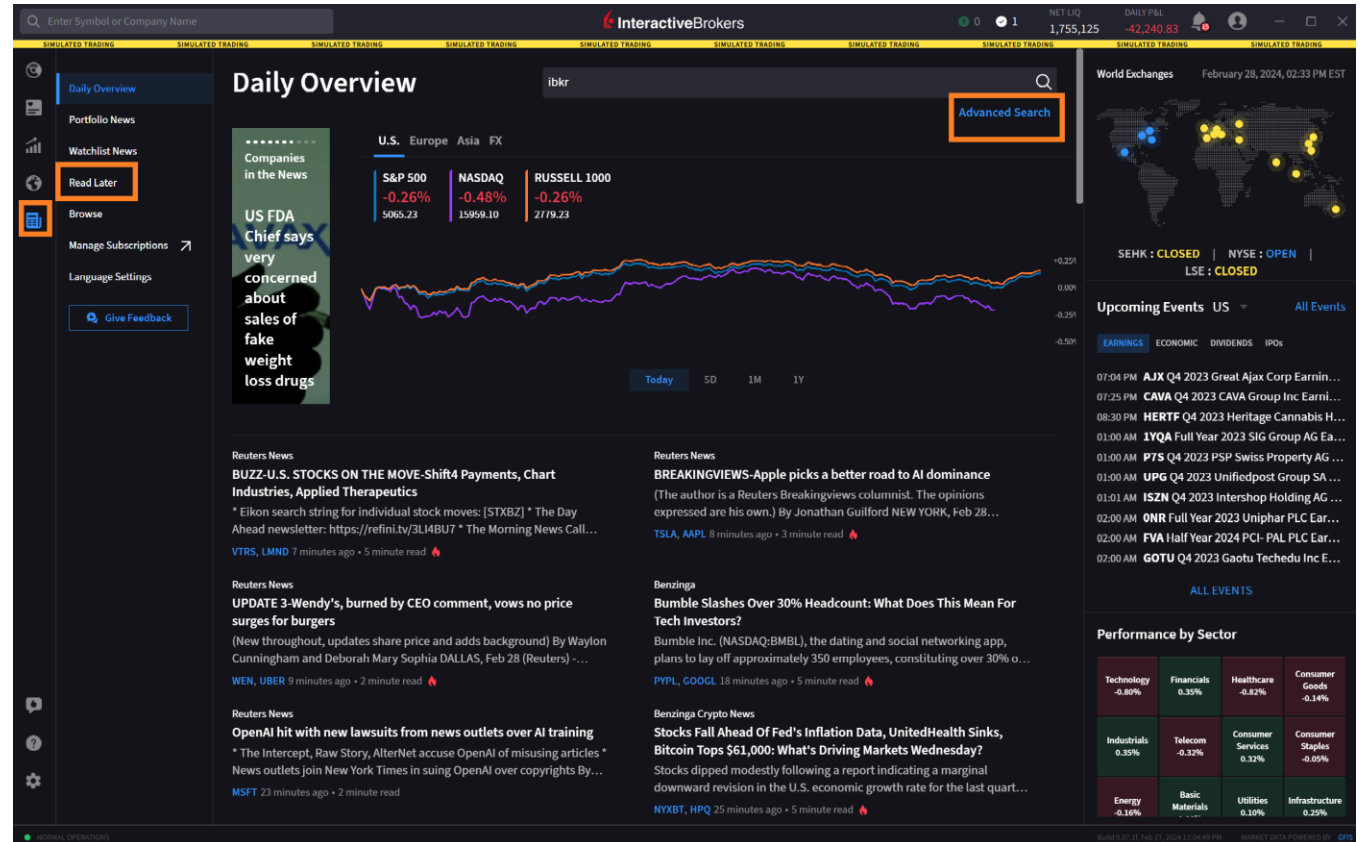
Financial Instru...	Company Name	Last	Change	Change %	Market Cap	Volume	Average Vol...	P/E	Open	High	Low	52 W
<input type="checkbox"/>	MSFT	MICROSOFT CORP	406.79	-0.69	-0.17%	3,024.633B	7.49M	24.7M	36.8	408.33	409.30	405.32
<input type="checkbox"/>	AAPL	APPLE INC	180.57	-2.06	-1.13%	2,786.549B	32.9M	54.6M	28.1	182.51	183.12	180.13
<input type="checkbox"/>	NVDA	NVIDIA CORP	781.77	-5.24	-0.67%	1,960.4B	29.7M	46.4M	65.7	776.20	789.33	771.25
<input type="checkbox"/>	AMZN	AMAZON.COM INC	173.46	-0.08	-0.05%	1,804.34B	17.8M	48.6M	60.1	172.56	174.05	172.27
<input type="checkbox"/>	META	META PLATFORMS INC-CLASS A	485.53	-1.52	-0.31%	1,239.801B	8.65M	19.0M	31.8	485.10	491.05	483.72
<input type="checkbox"/>	GOOGL	ALPHABET INC-CL A	135.57	-3.31	-2.38%	1,695.791B	24.5M	30.1M	24.9	137.87	138.01	135.52
<input type="checkbox"/>	GOOG	ALPHABET INC-CL C	136.80	-3.30	-2.36%	1,711.923B	19.0M	22.5M	25.2	139.13	139.28	136.76
<input type="checkbox"/>	LLY	ELI LILLY & CO	756.47	-8.53	-1.12%	716.281B	1.82M	3.24M	130	760.98	763.00	751.66
<input type="checkbox"/>	TSM	TAIWAN SEMICONDUCTOR-SP ADR	127.75	-0.84	-0.65%	568.729B	4.40M	12.3M	24.9	128.50	128.58	126.65
<input type="checkbox"/>	TSLA	TESLA INC	202.16	+2.43	1.22%	646.804B	82.6M	110M	47.2	200.31	205.30	198.44
<input type="checkbox"/>	AVGO	BROADCOM INC	1287.43	-8.80	-0.68%	603.702B	579K	3.33M	39.2	1293.00	1298.52	1282.97
<input type="checkbox"/>	BRK B	BERKSHIRE HATHAWAY INC-CL B	412.56	+3.65	0.89%	593.209M	2.32M	3.55M	0	408.40	414.67	407.71
<input type="checkbox"/>	JPM	JPMORGAN CHASE & CO	184.10	+0.65	0.35%	532.293B	3.67M	9.42M	11.4	183.43	185.20	182.96
<input type="checkbox"/>	WMT	WALMART INC	59.62	+0.03	0.05%	480.873B	8.23M	8.55M	31.2	59.51	59.76	59.31
<input type="checkbox"/>	LVMUY	LVMH MOET HENNESSY-UNSP ADR	184.20	-0.05	-0.03%	462.383B	136K	204K	28	184.21	184.50	182.55
<input type="checkbox"/>	UNH	UNITEDHEALTH GROUP INC	488.18	-25.24	-4.92%	451.835B	6.62M	3.66M	20.5	495.70	497.88	484.39
<input type="checkbox"/>	V	VISA INC-CLASS A SHARES	285.51	+2.34	0.83%	573.44B	2.39M	5.46M	32.8	282.10	285.87	282.08
<input type="checkbox"/>	MA	MASTERCARD INC - A	477.20	+2.45	0.52%	445.696B	1.09M	2.54M	40.4	474.17	478.80	473.67
<input type="checkbox"/>	NVO	NOVO-NORDISK A/S-SPONS ADR	121.56	-0.67	-0.55%	414.044B	1.92M	4.50M	44.8	122.00	122.15	120.93
<input type="checkbox"/>	XOM	EXXON MOBIL CORP	104.42	+0.39	0.37%	414.334B	8.25M	20.4M	11.7	104.20	105.43	104.00
<input type="checkbox"/>	TOYOF	TOYOTA MOTOR CORP	23.78	+0.03	0.13%	387.97B	5.90K	94.3K	0.1	24.56	24.56	23.72
<input type="checkbox"/>	JNJ	JOHNSON & JOHNSON	161.00	+0.02	0.01%	387.739B	3.37M	7.33M	30.5	161.00	161.32	160.29
<input type="checkbox"/>	TM	TOYOTA MOTOR CORP -SPON ADR	237.45	-0.59	-0.25%	386.857B	108K	319K	10.7	237.93	238.19	237.12
<input type="checkbox"/>	PG	PROCTER & GAMBLE CO/THE	159.68	+0.38	0.24%	375.554B	1.75M	7.45M	26.7	159.08	159.97	158.64
<input type="checkbox"/>	HD	HOME DEPOT INC	376.80	+1.24	0.33%	375.652B	1.34M	3.50M	25	375.56	379.84	375.06
<input type="checkbox"/>	ASML	ASML HOLDING NV-NY REG SHS	938.30	-3.07	-0.33%	380.49B	339K	1.16M	43.6	939.04	943.50	935.10

Any stock, options or futures symbols displayed are for illustrative purposes only and are not intended to portray recommendations, or an invitation or inducement to trade a particular financial instrument or to engage in an investment activity. There is a substantial risk of loss in trading futures and options. Past performance is not indicative of future results.

The News Screen

Key Features

- Daily Overview
- Save News Stories to Read Later
- Easily Sort in Advanced Search by:
 - Content Type
 - Importance,
 - Read Time, & More

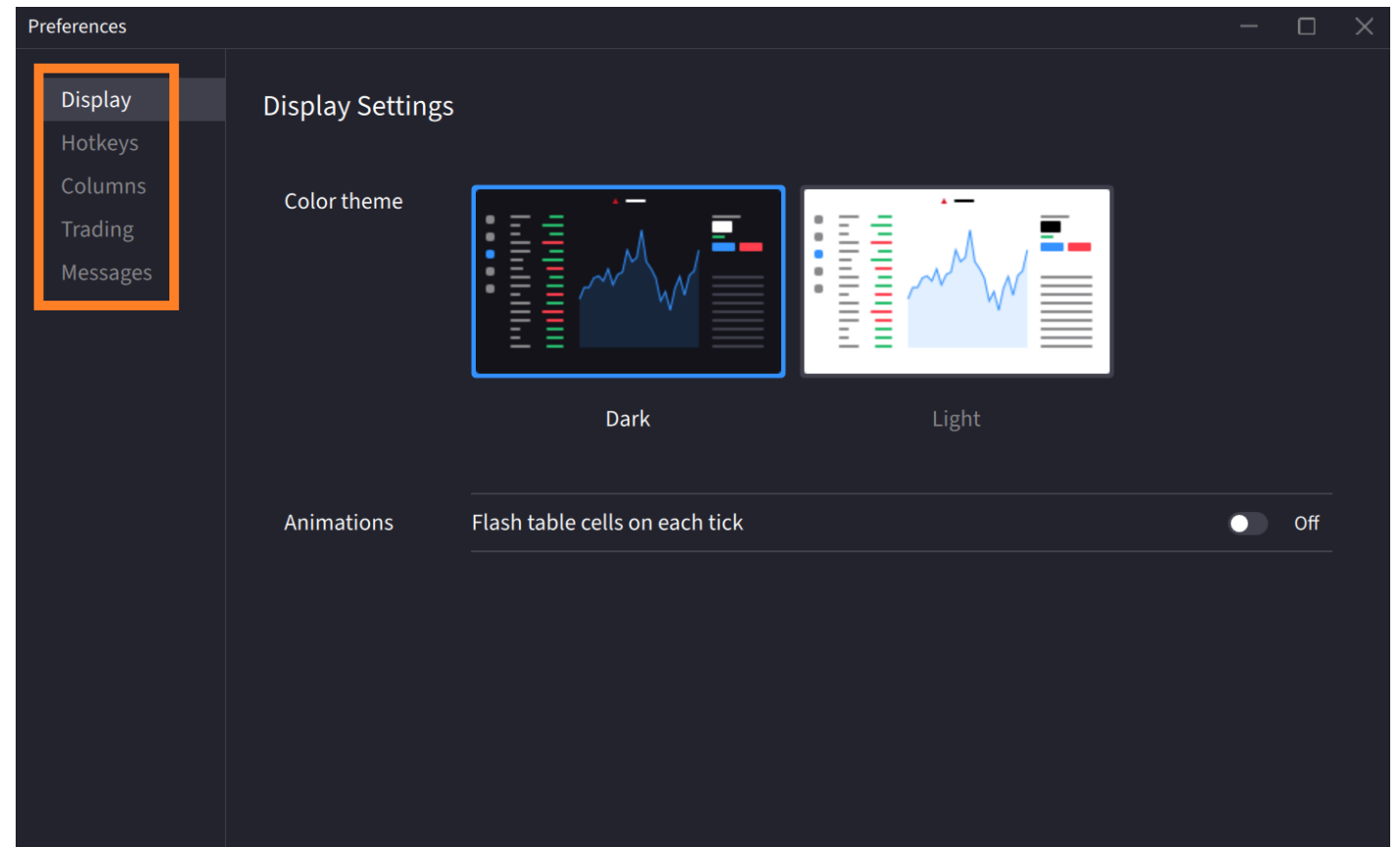


Any stock, options or futures symbols displayed are for illustrative purposes only and are not intended to portray recommendations, or an invitation or inducement to trade a particular financial instrument or to engage in an investment activity. There is a substantial risk of loss in trading futures and options. Past performance is not indicative of future results.

Settings

Key Features

- Change Display Color
- Create Hotkeys
- Edit Columns
- Trading Presets
- Customize Message Popups



Any stock, options or futures symbols displayed are for illustrative purposes only and are not intended to portray recommendations, or an invitation or inducement to trade a particular financial instrument or to engage in an investment activity. There is a substantial risk of loss in trading futures and options. Past performance is not indicative of future results.

Order Entry

Key Features

- Simple, Elegant Design
- Set Presets
- Attach Bracket Orders
- Advanced Order Types and Features Easily Accessible

Any stock, options or futures symbols displayed are for illustrative purposes only and are not intended to portray recommendations, or an invitation or inducement to trade a particular financial instrument or to engage in an investment activity. There is a substantial risk of loss in trading futures and options. Past performance is not indicative of future results.

INTERACTIVE BROKERS GRO-CL A

IBKR 108.52 ^D x100 1.43 +1.34% Ask 500 x 108.53 Bid 200 x 108.51 QU

REALTIME PRICE: CONSOLIDATED

Buy Order × Sell Order

Account DU3004488 Position 400
Avail. 563K Avg. Price 82.875

Quantity 300 Shares USD

Limit Market Stop ▼

Limit Price 108.53 Time-in-force Day GTC

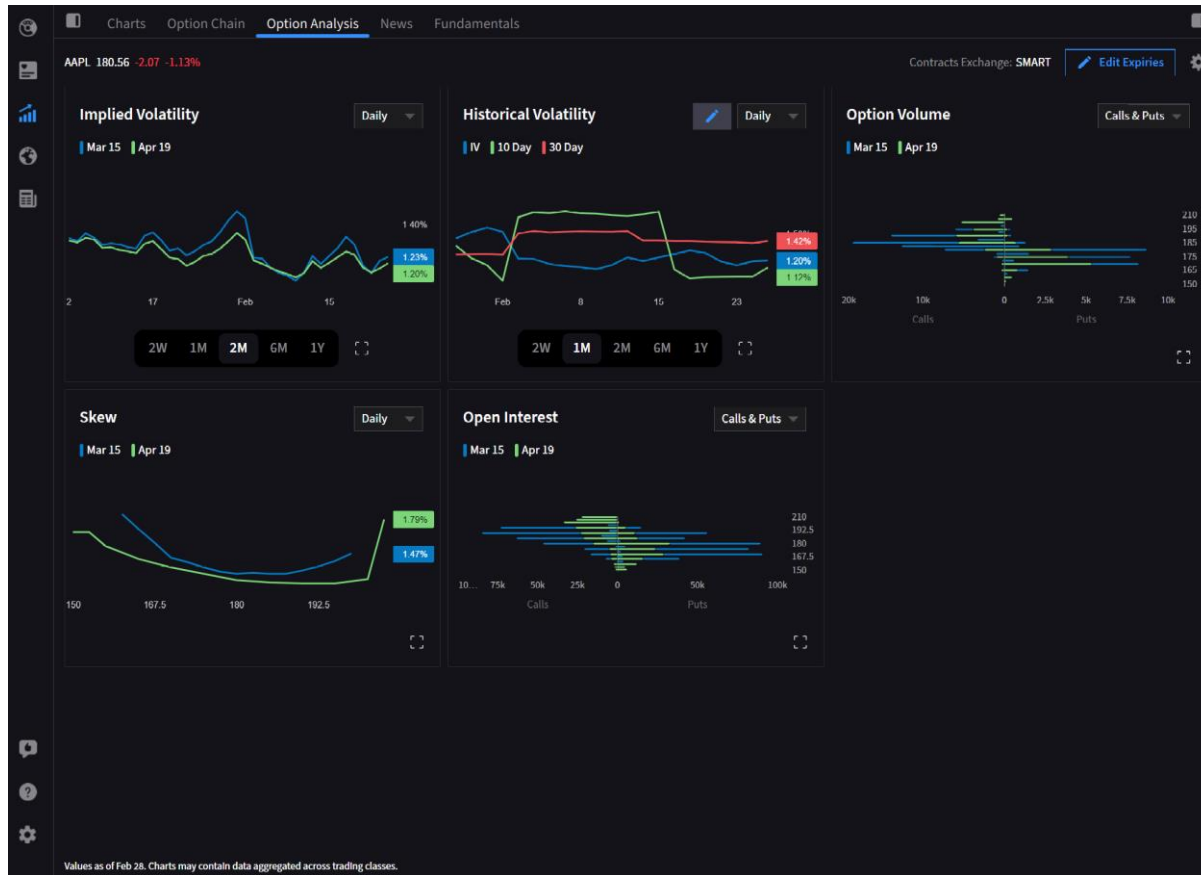
Ask: 108.53 Bid: 108.51 Fill outside RTH

+ ATTACH ORDERS (0)

Preview Save Submit Buy Order

Est. Total ≈ 32.5K USD Advanced ↗

For Your Reference



- IBKR Desktop Trading Course- [LINK](#)
- Desktop User Guide - [LINK](#)
- Press Release - [LINK](#)
- Web Landing Page - [LINK](#)

Any stock, options or futures symbols displayed are for illustrative purposes only and are not intended to portray recommendations, or an invitation or inducement to trade a particular financial instrument or to engage in an investment activity. There is a substantial risk of loss in trading futures and options. Past performance is not indicative of future results.