

IBKRCampus

IBKRWebinars

November 9, 2023

Toggle AI

The Power of Leading Indicators

Giuseppe Sette

President & Co-founder
Toggle AI

www.ibkrcampus.com/webinars

www.ibkrcampus.eu/webinars

Exchange and Industry Sponsored Webinars are presented by unaffiliated third parties. IBKR is not responsible for the content of these presentations. You should review the contents of each presentation and make your own judgment as to whether the content is appropriate for you. IBKR does not provide recommendations or advice. This presentation is not an advertisement or solicitation for new customers. It is intended only as an educational presentation.

Disclosure:

IB Global Investments LLC, a subsidiary of Interactive Broker Group Inc., the parent company of Interactive Brokers LLC, is a minority owner of Toggle AI.

Options involve risk and are not suitable for all investors. For information on the uses and risks of options, you can obtain a copy of the Options Clearing Corporation risk disclosure document titled Characteristics and Risks of Standardized Options by visiting ibkr.com/occ. Multiple leg strategies, including spreads, will incur multiple transaction costs.

Futures are not suitable for all investors. The amount you may lose may be greater than your initial investment. Before trading futures, please read the [CFTC Risk Disclosure](#). For a copy visit your local Interactive Brokers Website.

Security futures involve a high degree of risk and are not suitable for all investors. The amount you may lose may be greater than your initial investment. Before trading security futures, please read the [Security Futures Risk Disclosure Statement](#). For a visit copy your local Interactive Brokers Website.

There is a substantial risk of loss in foreign exchange trading. The settlement date of foreign exchange trades can vary due to time zone differences and bank holidays. When trading across foreign exchange markets, this may necessitate borrowing funds to settle foreign exchange trades. The interest rate on borrowed funds must be considered when computing the cost of trades across multiple markets.

The Order types available through Interactive Brokers Trader Workstation are designed to help you limit your loss and/or lock in a profit. Market conditions and other factors may affect execution. In general, orders guarantee a fill or guarantee a price, but not both. In extreme market conditions, an order may either be executed at a different price than anticipated or may not be filled in the marketplace.

There is a substantial risk of loss in trading futures and options. Past performance is not indicative of future results.

Any stock, options or futures symbols displayed are for illustrative purposes only and are not intended to portray recommendations.

IRS Circular 230 Notice: These statements are provided for information purposes only, are not intended to constitute tax advice which may be relied upon to avoid penalties under any federal, state, local or other tax statutes or regulations, and do not resolve any tax issues in your favor.

Interactive Brokers LLC is a member of NYSE FINRA SIPC

Interactive Brokers Canada Inc - Is a member of the Canadian Investment Regulatory Organization (CIRO) and Member - Canadian Investor Protection Fund

Interactive Brokers (U.K.) Limited is authorised and regulated by the Financial Conduct Authority. FCA Register Entry Number 208159

Interactive Brokers Ireland Limited is regulated by the Central Bank of Ireland. CBI, reference number C423427

Interactive Brokers Australia Pty. Ltd. - ABN 98 166 929 568 is licensed and regulated by the Australian Securities and Investments Commission AFSL: 453554

Interactive Brokers Singapore Pte. Ltd. - Is licensed and regulated by the Monetary Authority of Singapore. MAS, Licence No. CMS100917

Interactive Brokers Hong Kong Limited is regulated by the Hong Kong Securities and Futures Commission, and is a member of the SEHK and the HKFE

Interactive Brokers India Pvt. Ltd. member: NSE, BSE, SEBI. Regn. No. SEBI Registration No. INZ000217730; NSDL: IN-DP-NSDL-301-2008

As with all investments, your capital is at risk

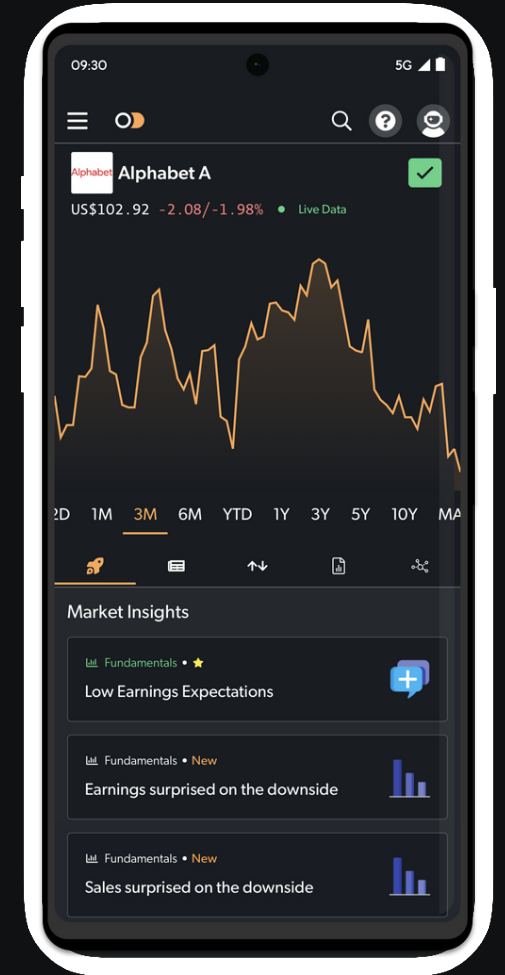
Any stock, options or futures symbols displayed are for illustrative purposes only and are not intended to portray recommendations. Past performance is not necessarily indicative of future results.

Nov 9th, 2023

TOGGLE AI

CONFIDENTIAL

FINALIST



TOGGLE

TURN ON INSIGHTS. TURN OFF NOISE

WINNER

MOST PROMISING NEW ENTRANT





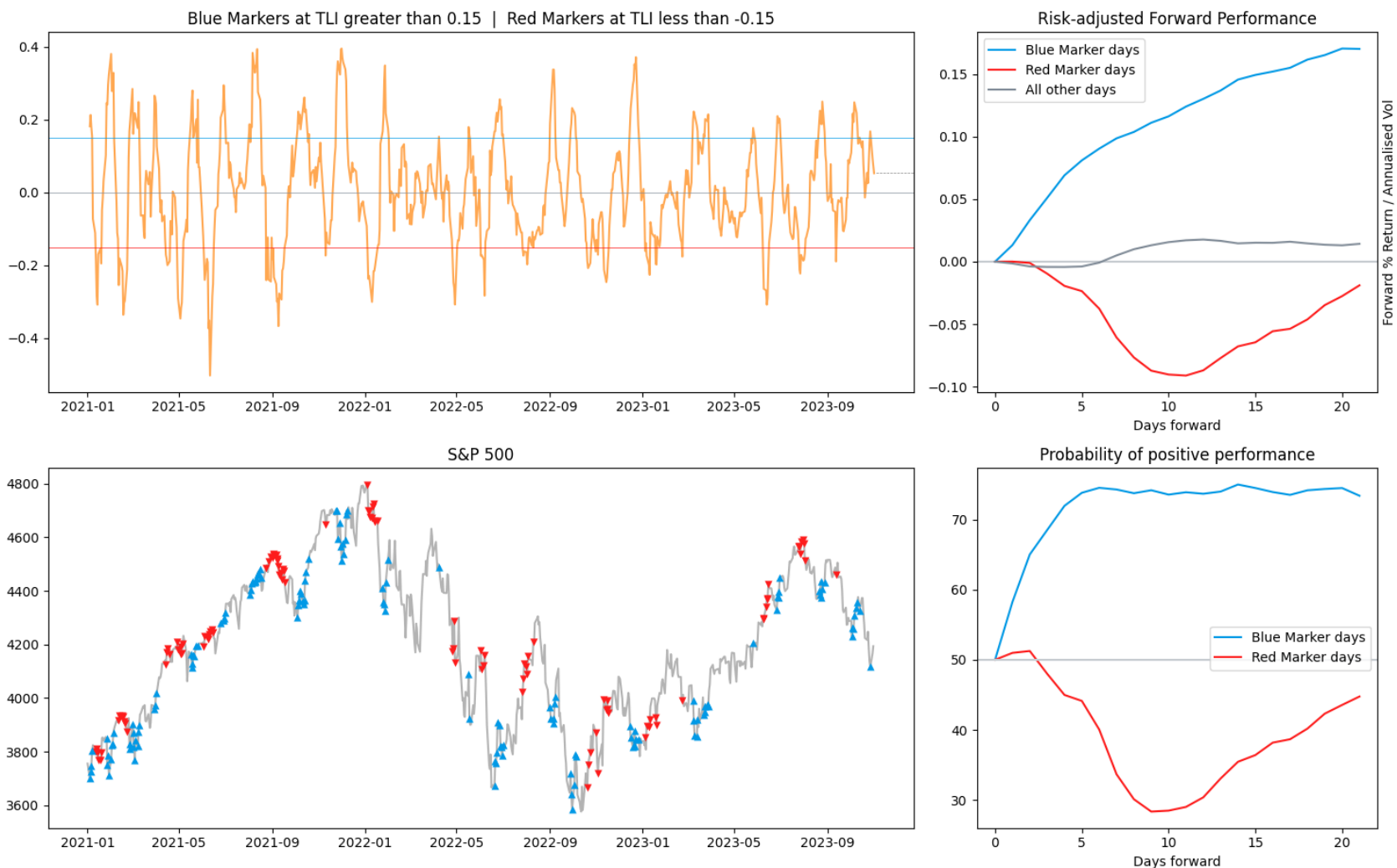
Today we'll showcase a methodology to aggregate AI insights into easy-to-read leading indicators

1. Introduction to TOGGLE
2. TOGGLE Market Leading Indicators

The TOGGLE Leading Indicator: bottom-up fundamentals and macro



TOGGLE Leading Indicator S&P 500 - 01 Nov 2023

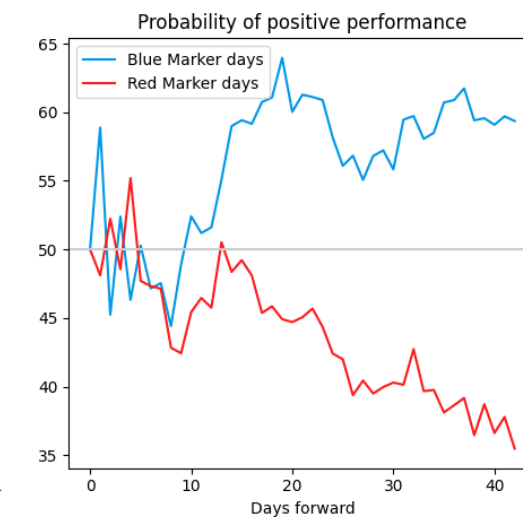
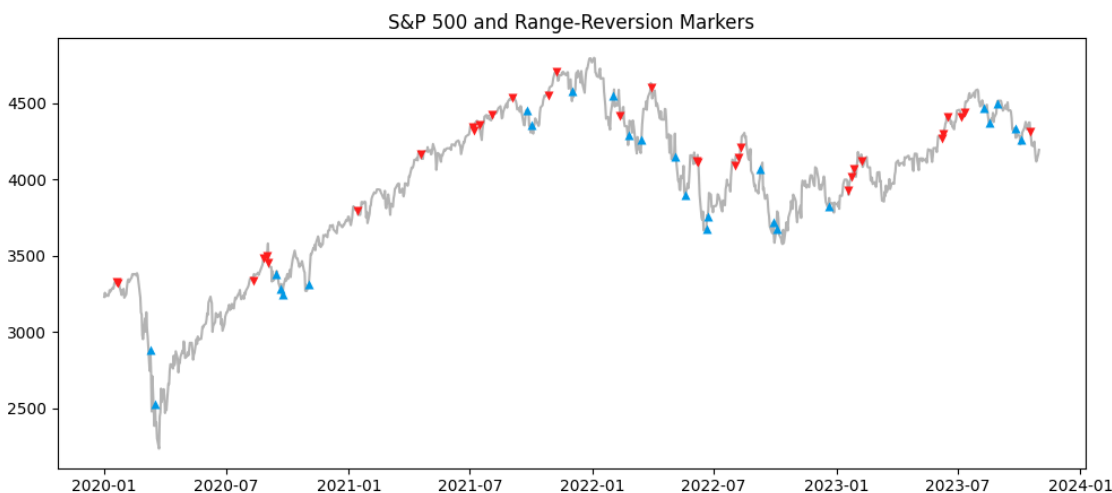
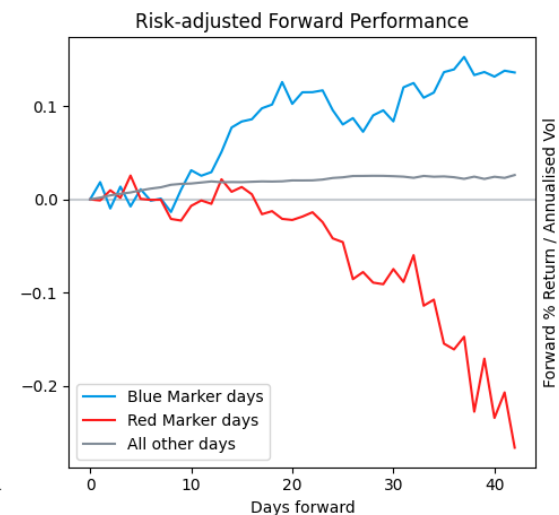
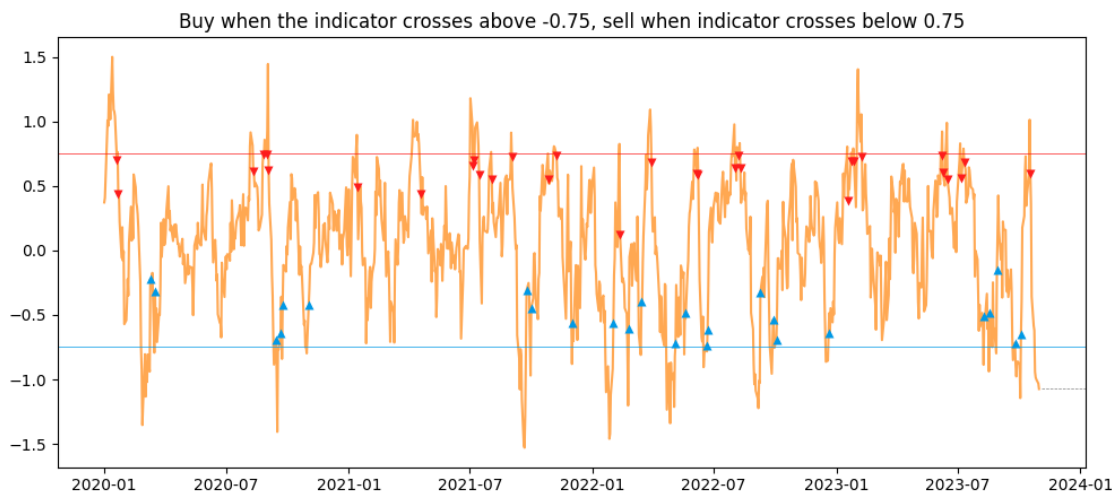


Any stock, options or futures symbols displayed are for illustrative purposes only and are not intended to portray recommendations. Past performance is not necessarily indicative of future results.

The Rangefinder Index: can SPX escape the range?



S&P 500 - TOGGLE Rangefinder Index - 01 Nov 2023

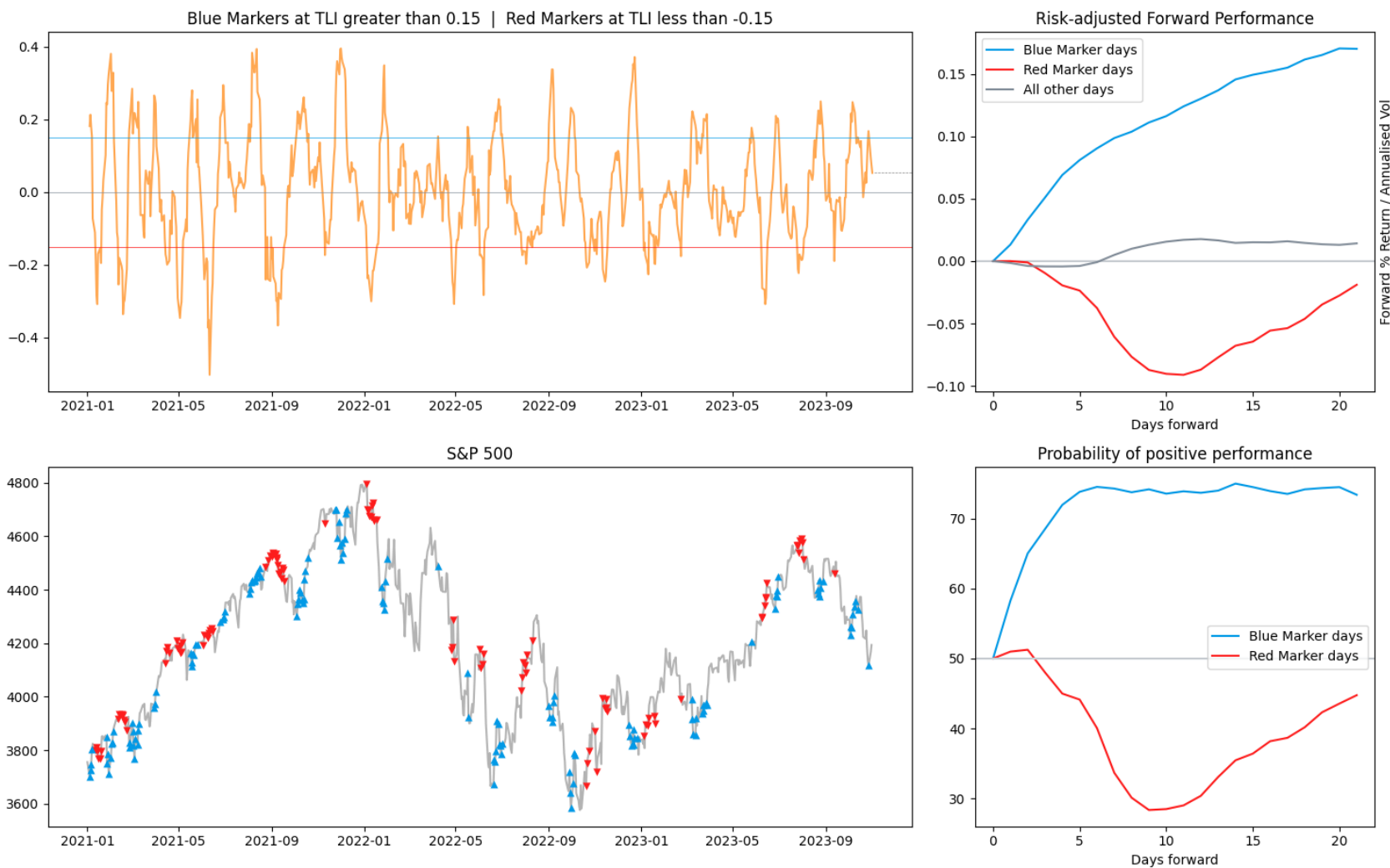


Any stock, options or futures symbols displayed are for illustrative purposes only and are not intended to portray recommendations. Past performance is not necessarily indicative of future results.

The Peak Leading Indicator: probability a peak is near



TOGGLE Leading Indicator S&P 500 - 01 Nov 2023

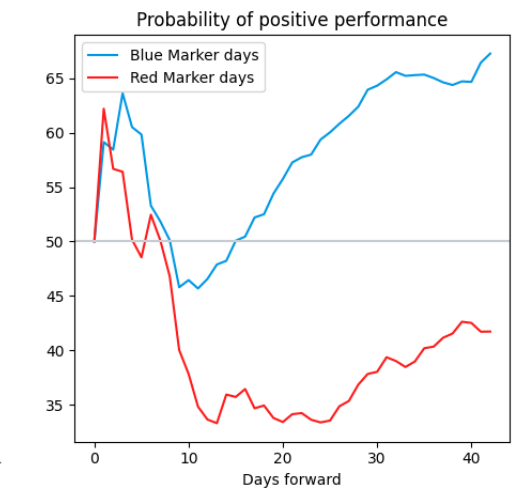
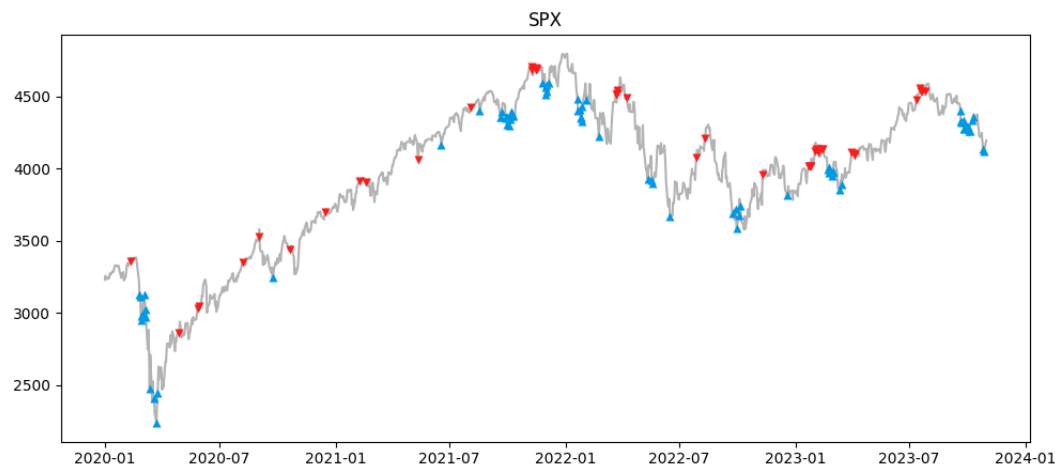
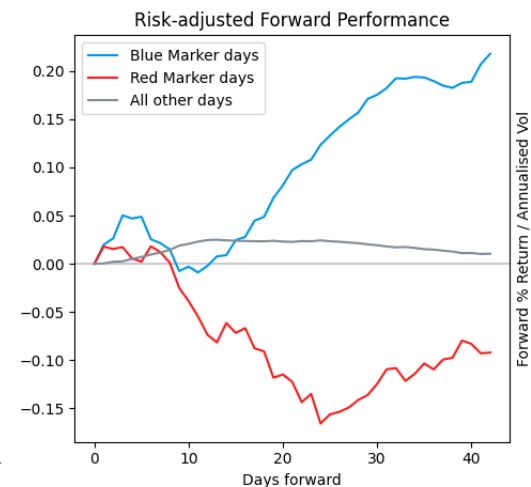
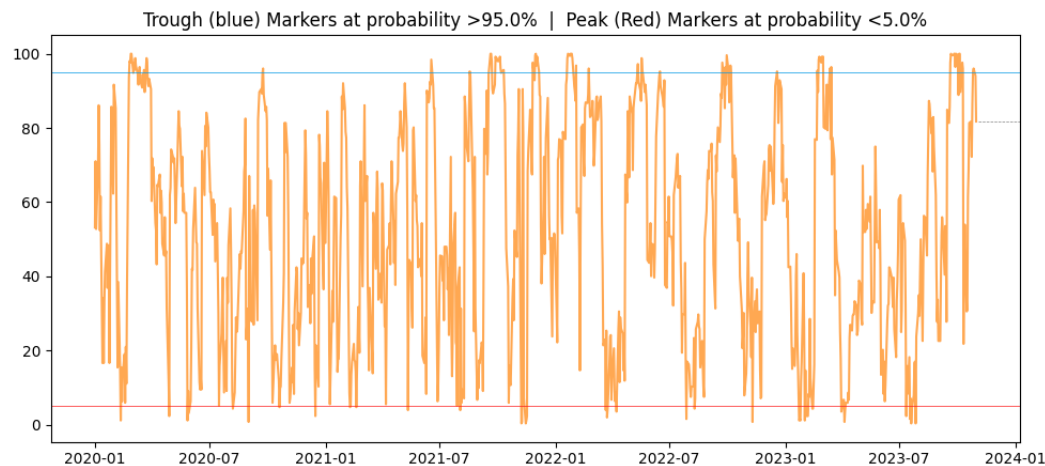


Any stock, options or futures symbols displayed are for illustrative purposes only and are not intended to portray recommendations. Past performance is not necessarily indicative of future results.

The Trough Leading Indicator: probability a trough is near



S&P 500 - TOGGLE Trough Index - 01 Nov 2023

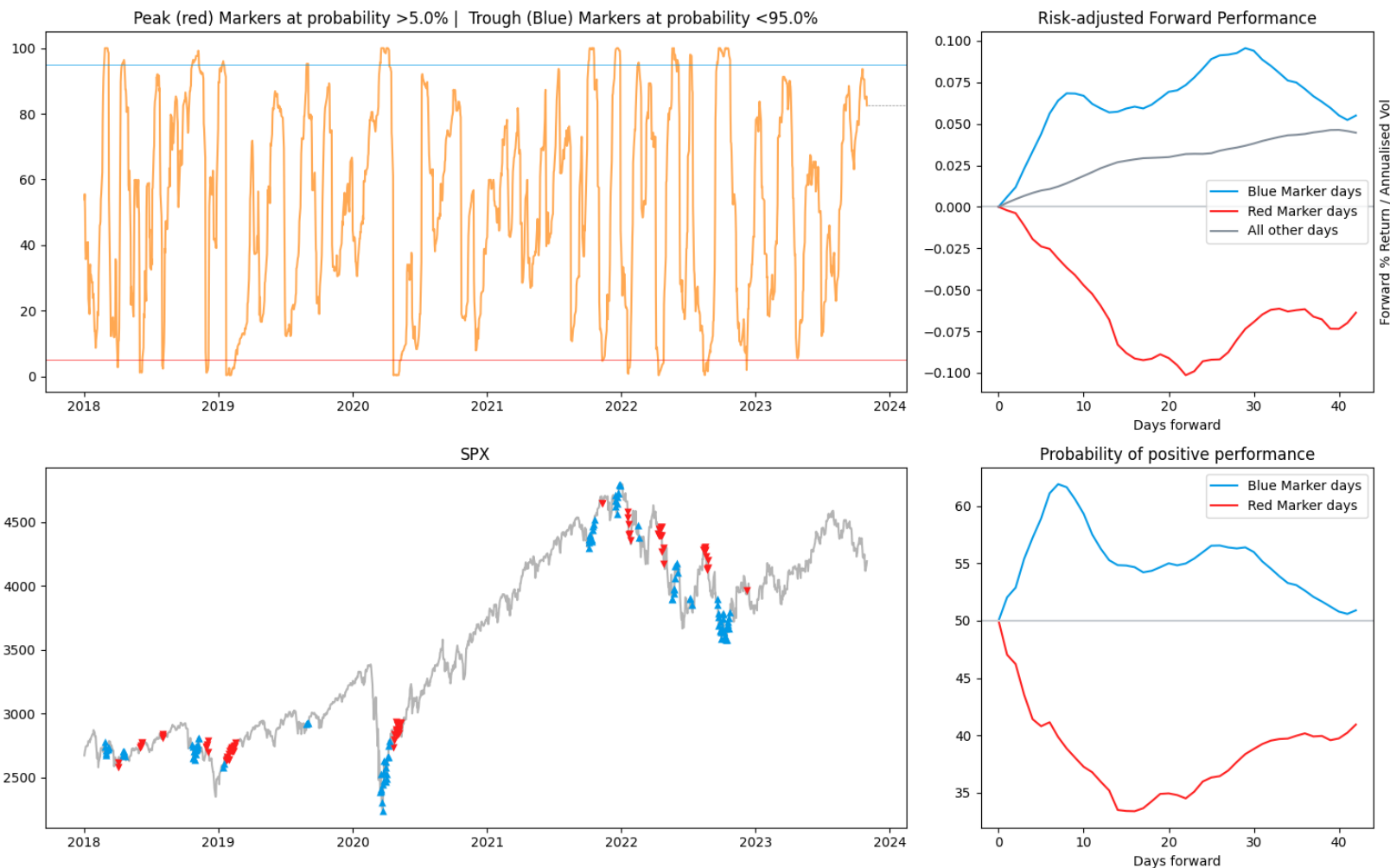


Any stock, options or futures symbols displayed are for illustrative purposes only and are not intended to portray recommendations. Past performance is not necessarily indicative of future results.

The Market Phase Shift Indicator: are markets ready to change gear?



S&P 500 - TOGGLE Market Phase Shift Index - 01 Nov 2023

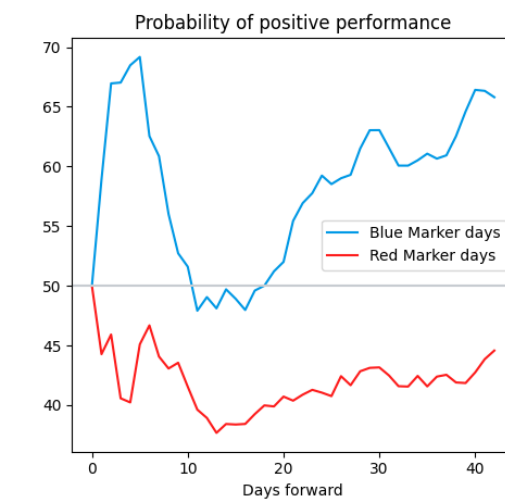
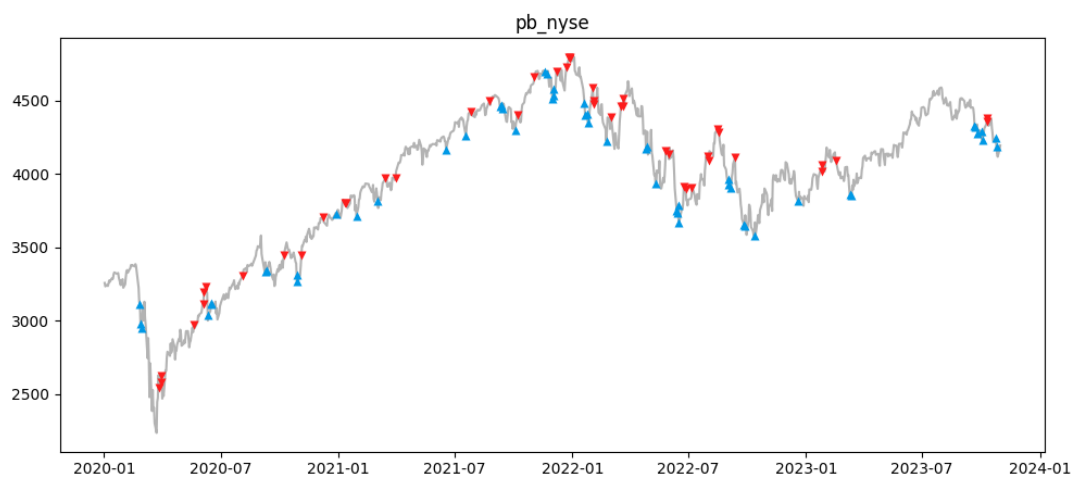
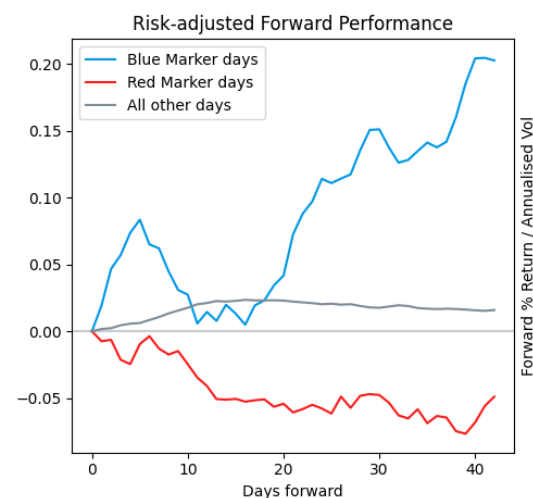
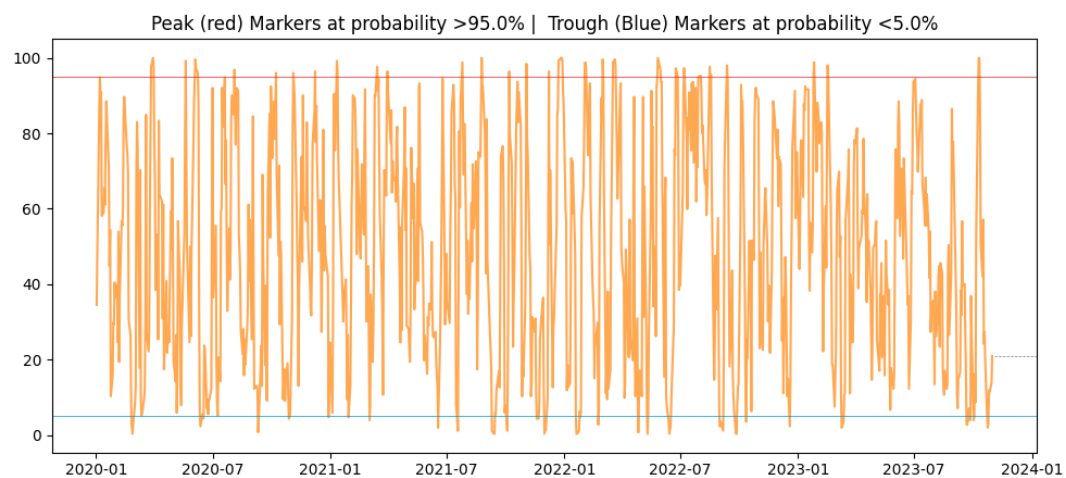


Any stock, options or futures symbols displayed are for illustrative purposes only and are not intended to portray recommendations. Past performance is not necessarily indicative of future results.

The Candle Breadth Indicator: are stocks swarming?



S&P 500 - TOGGLE Candle Breadth Index - 01 Nov 2023

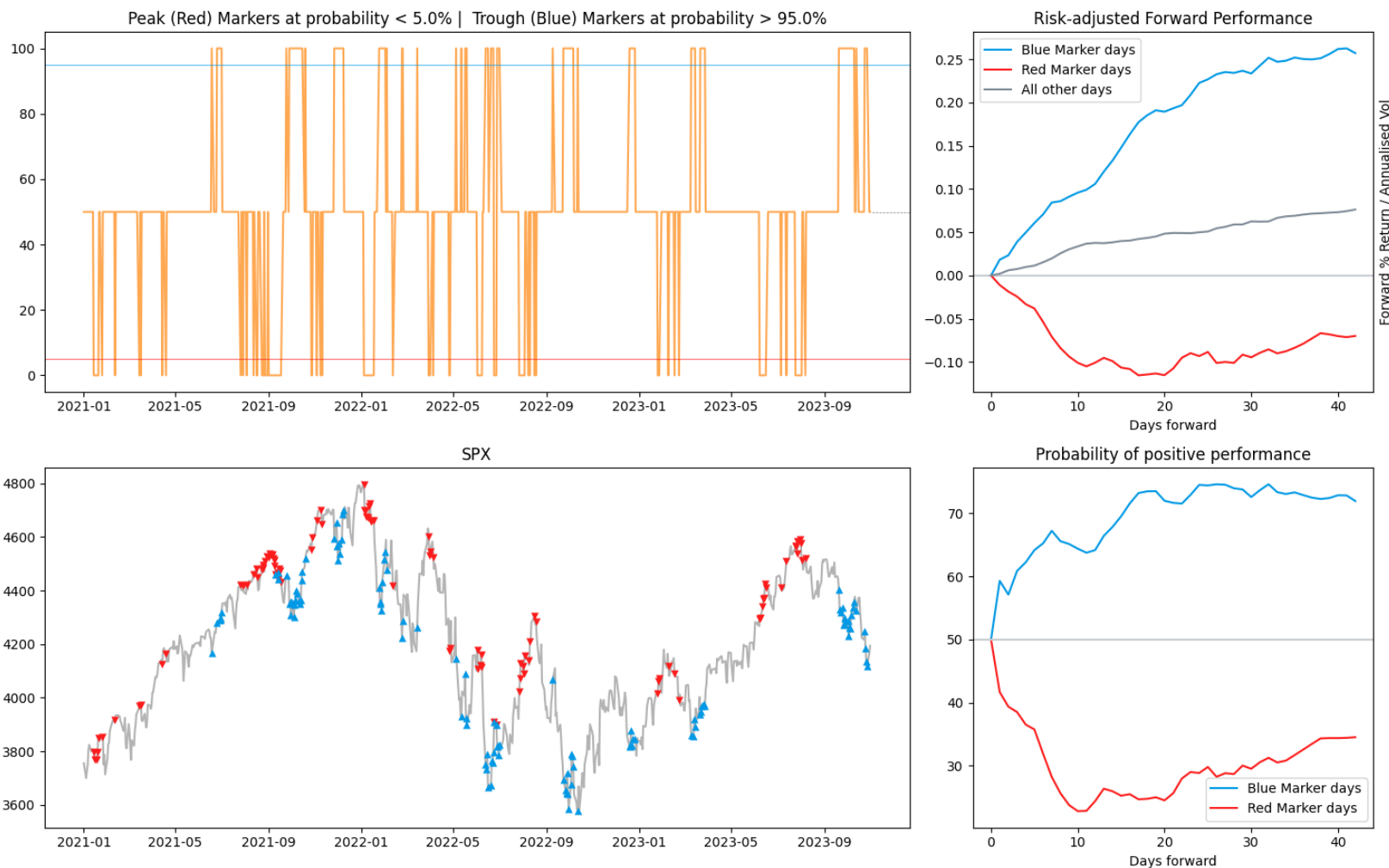


Any stock, options or futures symbols displayed are for illustrative purposes only and are not intended to portray recommendations. Past performance is not necessarily indicative of future results.

The TOGGLE Aggregated Indicator: bringing it all together



S&P 500 - TOGGLE Aggregated Index - 01 Nov 2023



Any stock, options or futures symbols displayed are for illustrative purposes only and are not intended to portray recommendations. Past performance is not necessarily indicative of future results.

Get it early in the morning and on toggle.ai/my-toggle



Pre-market Leading Indicators Overview

Good morning Pros!

Market Phase Shift is REALLY close to its bearish threshold. But **a word of warning**. This market setup at the top of the recent range will attract short-sellers like bees to honey. This will be a crowded position, so be careful about taking large risks here.

- **TLI**
- **Rangefinder Index**
- **Peak Probability Indicator**
- **Trough Probability Indicator**
- **Candle Breadth (almost ■)**
- **Market Phase Shift Indicator**

S&P 500 - TOGGLE Aggregated Index - 25 Apr 2023

Peak (Red) Markers at probability < 5.0% | Trough (Blue) Markers at probability > 95.0%

Risk-adjusted Forward Performance

Probability of positive performance

TOGGLE

SPDR S&P 500 ETF Trust
\$406.08 -6.55/-1.59% • Last Close

• Bullish TLI • Bearish TLI

TOGGLE Leading Indicator

— TLI — Bullish Threshold — Bearish Threshold

TOGGLE Leading Indicator is the aggregate of all TOGGLE insights on 5,000 US stocks.
[Learn more](#)

Any stock, options or futures symbols displayed are for illustrative purposes only and are not intended to portray recommendations. Past performance is not necessarily indicative of future results.

Thank you

Giuseppe Sette
giuseppe@toggle.ai

TOGGLE

TURN ON INSIGHTS. TURN OFF NOISE

Disclaimer

Note that past performance is not indicative of future performance

TOGGLE email briefings, newsletters, alerts, insights, and similar publications "Publications" do not reflect any opinions of TOGGLE or its affiliates. Publications are meant for informational purposes only, are not intended to serve as a recommendation to buy or sell any security in a brokerage account or any platform and are not an offer or sale of a security nor an endorsement or advertisement of the same. While TOGGLE seeks to ensure the accuracy of the information it presents, it has no obligation and shall not be liable for errors in any data, information, or Publications accessible through TOGGLE products or services. All investments involve risk, and the past performance of a security or financial product does not guarantee future results or returns. TOGGLE is not a broker-dealer nor an investment adviser, and makes no representations or warranties, express or implied, and disclaims any and all warranties with respect to any information accessible via any TOGGLE Publications or TOGGLE data.